

self build & new home

PROJECT
New Dwelling

DESIGN SUMMARY

Designed on the edge of a Conservation Area, the new dwelling has been designed to maximise the house's connection with the surrounding landscape.

Using stone and cedar the building enhances its setting and provides an array of spaces that relate to the external views and the family's way of living.

The design utilises the drop in level across the site creating different heights and volumes within.

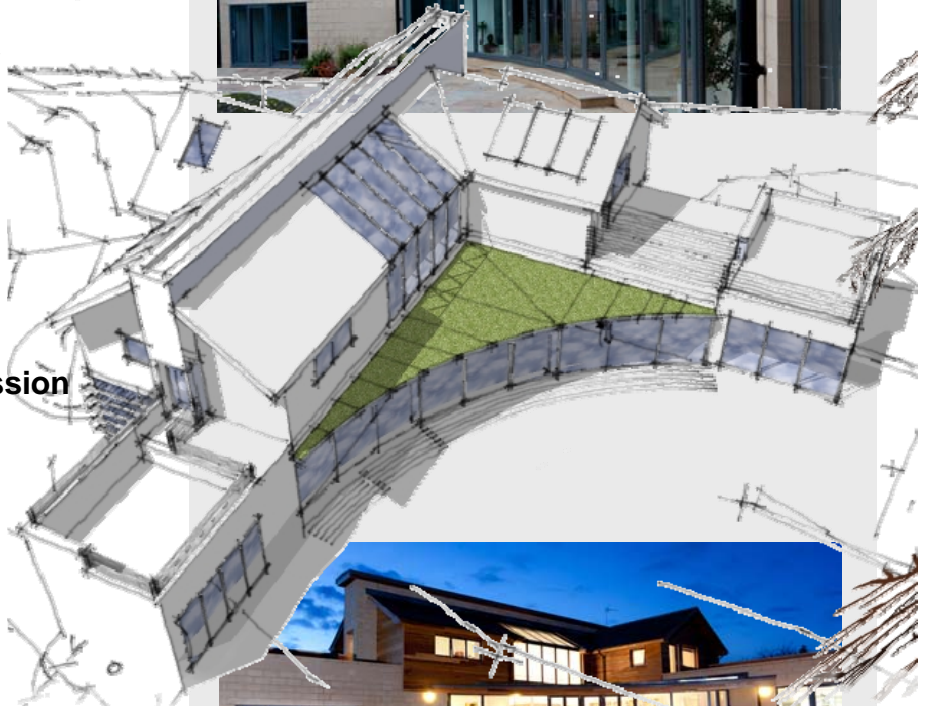
The use of sedum roofs, rainwater harvesting and air source heat pumps minimises the home's reliance on external utility supplies.

The client has been involved from conception to completion to create their much wanted home.

**Free one hour
initial consultation**

Contact us now to book your session

**Get in touch
01865 407722**



self build & new home

PROJECT
New Dwelling

DATE COMPLETED
2010

