

## self build + new homes

### PROJECT

New passive design dwelling

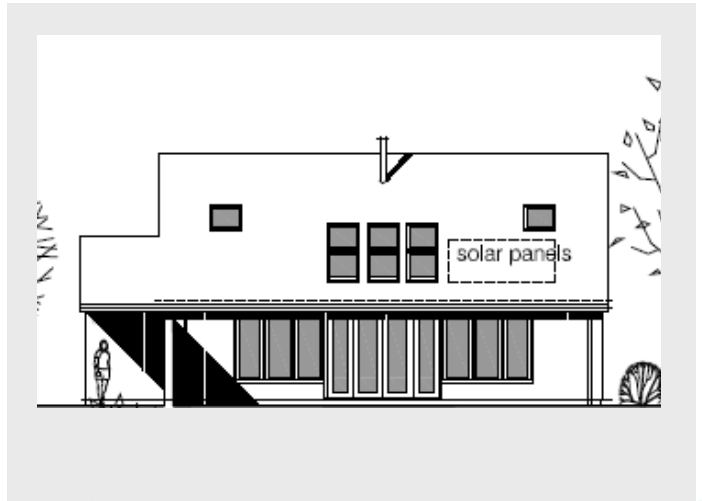
### DESIGN SUMMARY

Our client had inherited a house with a large plot and wished to develop the rear to create a new family home for them and sell on the existing house.

Sustainable design was paramount and while controlling the budget was paramount the building was designed to make best use of passive solar design.

South facing glazing with natural seasonal shading was incorporated together with a heavy mass structure. This acted as a large heat sink and controlled temperature fluctuations that occurred naturally during the day. Passive stack ventilation was used to move the warm air through the building to both heat it and provide air-changes needed by the building Regulations.

Future provision for solar panels was incorporated in the heating system for adding when budget allowed,



**Free one hour  
initial consultation**

Contact us now to book your session

**Get in touch  
01865 407722**

